

## HOW TO READ YOUR WATER METER

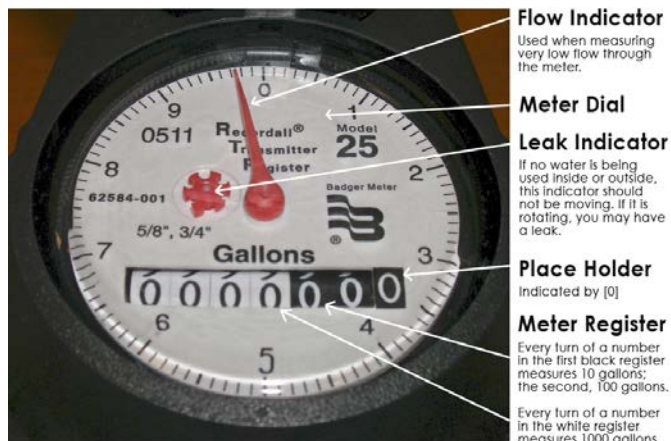
October 2019 – Harris County Municipal Utility District 501

As a homeowner, there are several reasons why it is helpful to be able to locate and read your water meter. First, you can determine just how much water you use in a day. As an example, by reading your meter at the beginning and the end of a day you can compare the two reads and tell how much water you and your family used that day.

Another helpful tool in understanding your meter reading is to detect leaks early. If you turn off all faucets and any equipment that uses water in your home, look at your meter and the leak indicator or low flow indicator is still turning, then you have a leak somewhere. The speed at which the indicator is turning determines how large the leak is. Here are some tips to help you find and read your water meter.



Your water meter is generally located near the curb in front of your home close to the sidewalk. For a corner lot it may be on the side of your home. Water meters are typically housed in a concrete or plastic box that may be marked "water" (as shown in the above photo). Carefully remove the lid by using a tool such as a large screwdriver or pliers. Look out for "creepy crawlies" that may be using your meter box as their home!



**Flow Indicator**

Used when measuring very low flow through the meter.

**Meter Dial**

**Leak Indicator**

If no water is being used inside or outside, this indicator should not be moving. If it is rotating, you may have a leak.

**Place Holder**

Indicated by [0]

**Meter Register**

Every turn of a number in the first black register measures 10 gallons; the second, 100 gallons.

Every turn of a number in the white register measures 1000 gallons

The picture on the left shows the water meter face and how to read the meter register. For specific information on rates, billing information and FAQ's call EDP at 832-467-1599 or visit EDP's website at: <http://www.edpwater.com> and look for the link to HC MUD 501. Please also be sure to visit the FAQs page for more helpful information: <https://www.edpwater.com/faqs/>.